



Maintenance Choice®

Save with 90-day supplies



Fill your medications in 90-day supplies at a select participating pharmacy.

A change is coming to your prescription benefit plan

Your plan offers Maintenance Choice, a program which gives you the option to pick up or get delivery of 90-day supplies of the medication you take regularly (for things like diabetes, high blood pressure, asthma, etc.) at select participating pharmacies.

The medications you take regularly will need to be filled in 90-day supplies at a select participating pharmacy. If you refill at another pharmacy, or

in 30-day supplies, your medications won't be covered and you'll pay the full cost.

If you want to keep filling your prescriptions at your current pharmacy in 30-day supplies without paying the full cost, you can call the number on your member ID card to opt out once your new plan starts. If you opt out during the plan year, you will need to opt out again when your plan benefits renew.

Here's what you need to do:



1. On or after your new plan's effective date, use the Pharmacy Locator Tool to find a participating pharmacy.



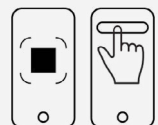
2. Ask your prescriber to send a new 90-day prescription to that pharmacy for pickup or delivery.

Please note: You can still fill the prescriptions you take for a limited time (such as antibiotics) at any participating pharmacy in your plan's network.

To find a participating pharmacy, visit [Caremark.com/PharmacyLocator](https://www.caremark.com/PharmacyLocator) or scan the code.



To scan the QR code:
Open your camera.
Scan the code.
Tap the link.



Oklahoma: Some Oklahoma residents may not be eligible to participate in the Maintenance Choice program. If you have questions about your eligibility, please contact Customer Care at the number on the back of your member ID card.